

Maximum Services Ltd

62 Dagnall Park, London, SE25 6NS

Phone: 07912 101935; Fax: 0208 408 5088; E-Mail: maximum.services.ua@gmail.com; Web: www.maximumservices.biz

Objective

Based in London covering the Greater London and suburb areas our aim is to provide a professional, reliable service, offering a high standard of work at a competitive rate using quality products.

We strongly believe in providing a high quality service at a fair and competitive price. We pay particular attention to the fine details of our clients' requests, resulting in quality work and satisfied customers. The future growth of our company is based on the satisfaction of clients and subsequent referral.

Whatever you require, we are happy to discuss your requirements and give you professional advice. Any private jobs and subcontracted are welcome.

Build our business on our reputation.

Experience

Pieri Interiors/DD Porter

2013

Ceiling fitout at Nuffield Hospital, Brentwood, Essex



Pieri Interiors/Neilcott

2013

A luxury development of two 4-bedroom townhouses with gardens, four 3-bedroom duplex apartments with roof terraces and three 2-bedroom apartments at Chiswick High Road, West London



Pieri Interiors/Faithean

2013

Office building refurbishment at Bedford Street, Covent Garden, Central London



Pieri Interiors/Durtnell

2012

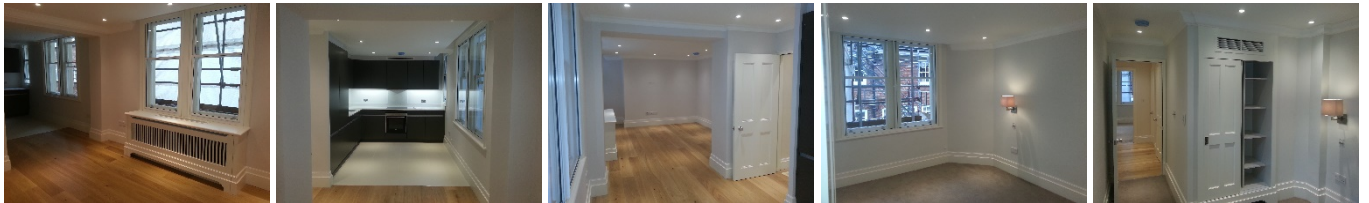
We engaged in a development of WestCroft Leisure Centre in Carlshalton, building bulkheads, shaftwalls, MF ceilings, lay-in grid ceilings and partitions



CGA/Chorus

2012

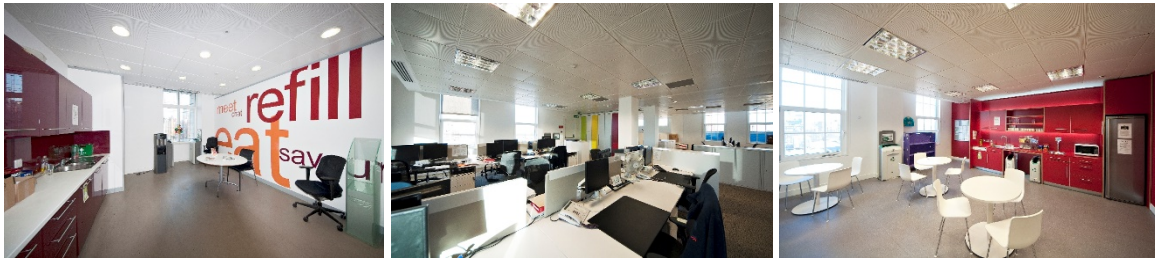
Building apartments in the heart of Mayfair, London



CGA/Spence

2012

Refurbishing offices at the Waterloo Station, London



CGA

2012

Christie's Auction House Commercial Kitchen Extension, London



CGA/BW Interiors

2012

SAS/MetalPan Ceilings and partition refurbishment at Carlton House in Regent Street, Central London
Please, follow the link to check out the video: [Carlton House Refurbishment](#)



FitOut (UK)/Sainsbury's

2012

Build tracking roots, jumbo walls, bulkheads at Sainsbury's supermarket in Croydon, UK

Please, follow the link to check out the video: [Bulkhead at Sainsbury's Purley Way, Croydon](#)



Cadons/Willmott Dixon

2012

Build a new extension of a High School for girls in Stamford Hill, North London



CGA/Spence

2011

Fenchurch Street Station Refurbishment in the City of London



CGA/Chorus

2011

North Audley Street luxury apartments development in Mayfair, Central London



Education

We are NVQ Level 2 and CSCS trained, have IPAF tickets.

Skills

We are specialist in building partitions, party walls, secure walls, all kind of metal framing, gypliner, shaftwalls, windcatchers, risers, SVP boxings, cupboards, bulkheads, blind boxes, beam encasement, fire stopping including rockwool fire batting and fire masticing.

We also provide an excellent service in putting up MF ceilings, lay-in grid/Armstrong ceilings, metal pan/SAS ceilings, Ecophon ceilings.